

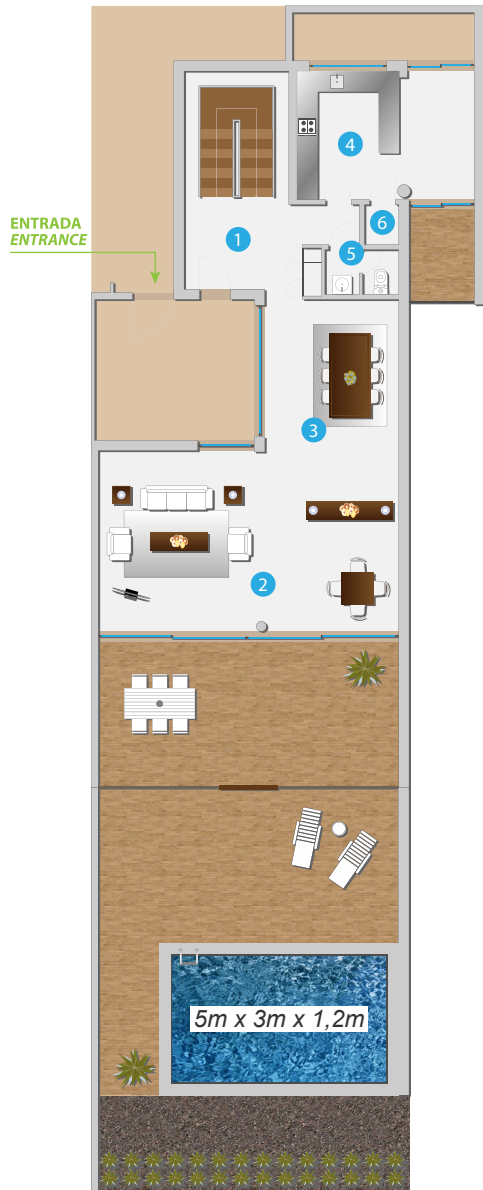
VIDAMAR TOWNHOUSE V4/CANTO 2 - VIDAMAR TOWNHOUSE V4/CORNER 2

PISO TÉRREO - GROUND FLOOR

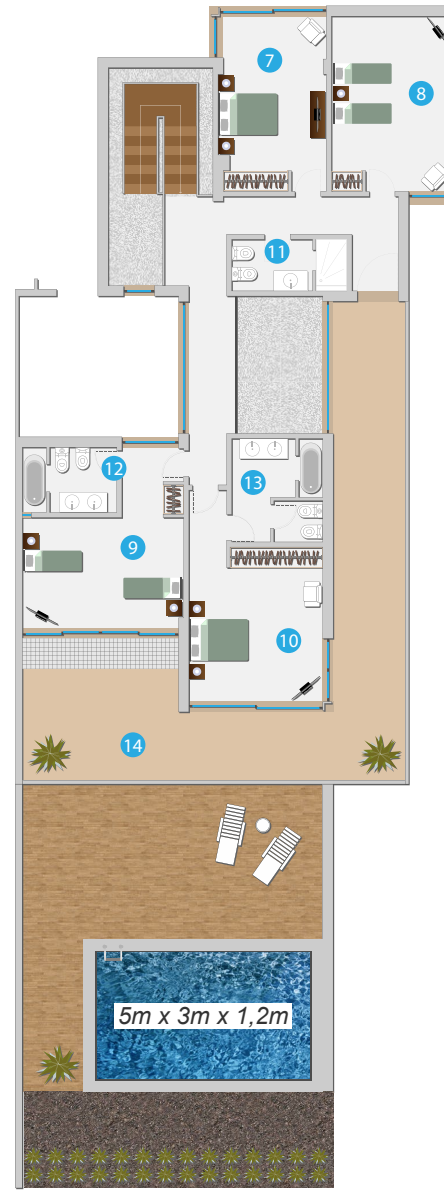
1	Hall	9,5 m ²
2	Sala <i>Living-Room</i>	46,6 m ²
3	Apoio <i>Dinning-Room</i>	17,6 m ²
4	Cozinha <i>Kitchen</i>	24,7 m ²
5	Lavabo <i>Bathroom</i>	2,8 m ²
6	Despensa <i>Storeroom</i>	1,16 m ²

1º ANDAR - FIRST FLOOR

7	Quarto 1 <i>Room 1</i>	15,5 m ²
8	Quarto 2 <i>Room 2</i>	17,6 m ²
9	Quarto 3 <i>Room 3</i>	18,7 m ²
10	Quarto 4 <i>Room 4</i>	19,2 m ²
11	Lavabo 1 <i>Bathroom 1</i>	5,0 m ²
12	Lavabo 2 <i>Bathroom 2</i>	5,2 m ²
13	Lavabo 3 <i>Bathroom 3</i>	7,7 m ²
14	Varanda <i>Balcony</i>	52,0 m ²



PISO TÉRREO - GROUND FLOOR



1º ANDAR - FIRST FLOOR